



The Next Generation In Transporter Technology



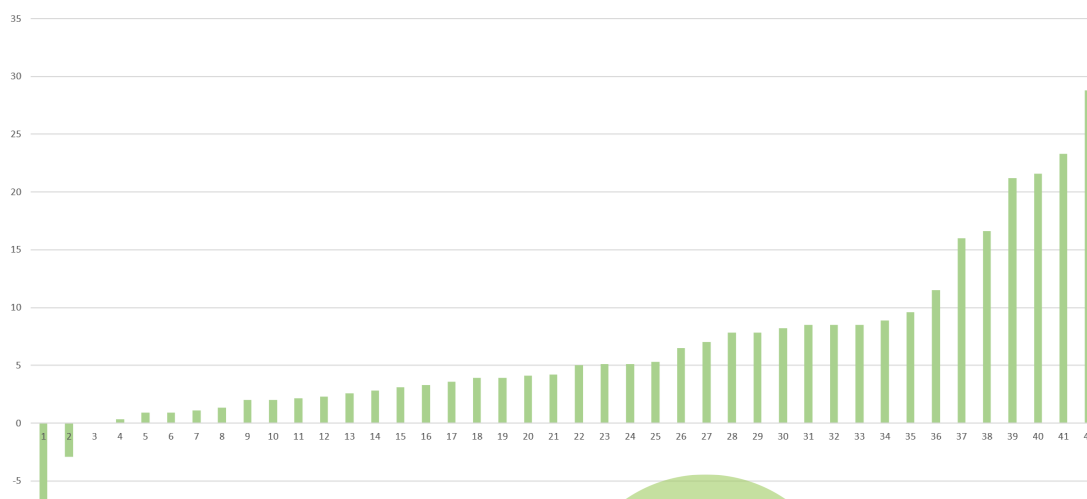
WHAT IS NUTEX FA?

Nutex™ FA is a concentrated fulvic acid transporter catalyst for all liquid nutrient sprays and crop protection products. Nutex FA offers versatility across both foliar and soil applied applications. Nutex FA has over a decade of positive yield responses across a multitude of crops, soil types, and nutritional products. With long term tank mix compatibility and ultra low use rates, Nutex FA provides flexibility and an optimal return on your investment.

Applications:

In-Furrow / Starter
All Foliar Nutrition Sprays
Post Herbicide Sprays
Early Fungicide Sprays
Late Fungicide Sprays

2018 - 2022 University Replicated Field Trials
Bushel Increase VS Grower Standard Program





The Next Generation In Transporter Technology

COMPONENTS:

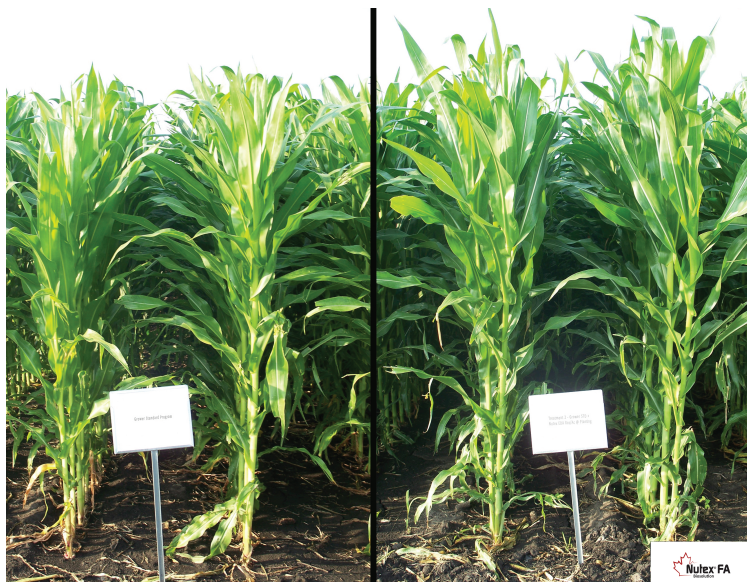
Nutex® FA is a proprietary formulation with a guaranteed analysis of 6,0% Fulvic Acids

BENEFITS FOR USERS:

- Supports plant nutrient uptake efficiency for better root growth and growth function
- Increases plant nutrient assimilation throughout the plant
- High activity of performance with low dosages
- Compatible with all fertilizer solutions, including calcium and acidic pH fertilizers
- Supports stomatal regulation for improved transpiration and adsorption in hot summer conditions
- Enhances and supports microbial populations in the planting zone when used with starter fertilizers
- Improves abiotic stress tolerance
- Apply up to three applications per season achieving positive ROI results

APPLICATION GUIDELINES:

In-Furrow or Foliar Applications
at 0,17 - 0,24 Liters per Acre



Over 70 bio-assay and greenhouse trials have been conducted to determine the nutrient uptake efficiency benefits of adding Nutex® FA to soil and foliar nutrient applications. The results compiled across all crops, fertilizers, applications, and timings are shown in the chart below .

NUTRIENT	% EFFICIENCY IMPROVEMENT
Nitrogen (N)	10–20%
Phosphorus (P)	12–22%
Potassium (K)	15–22%
Ca & Mg	20–40%
Zn & Mn	20–50%
Boron (B)	15–22%

To learn more about Nutex® FA and our entire portfolio of agriculture solutions, talk to your Sipcam Agro Canada representative or visit www.sipcamagrocanada.ca.

Sipcam Agro Canada | Winnipeg, Manitoba R2M5N3 | Customer Service Toll Free (833) 844-1924

Nutex® FA is a registered trademark of Sipcam Agro USA, Inc. ©2025 Sipcam Agro USA, Inc. All rights reserved. Always read and follow label directions.